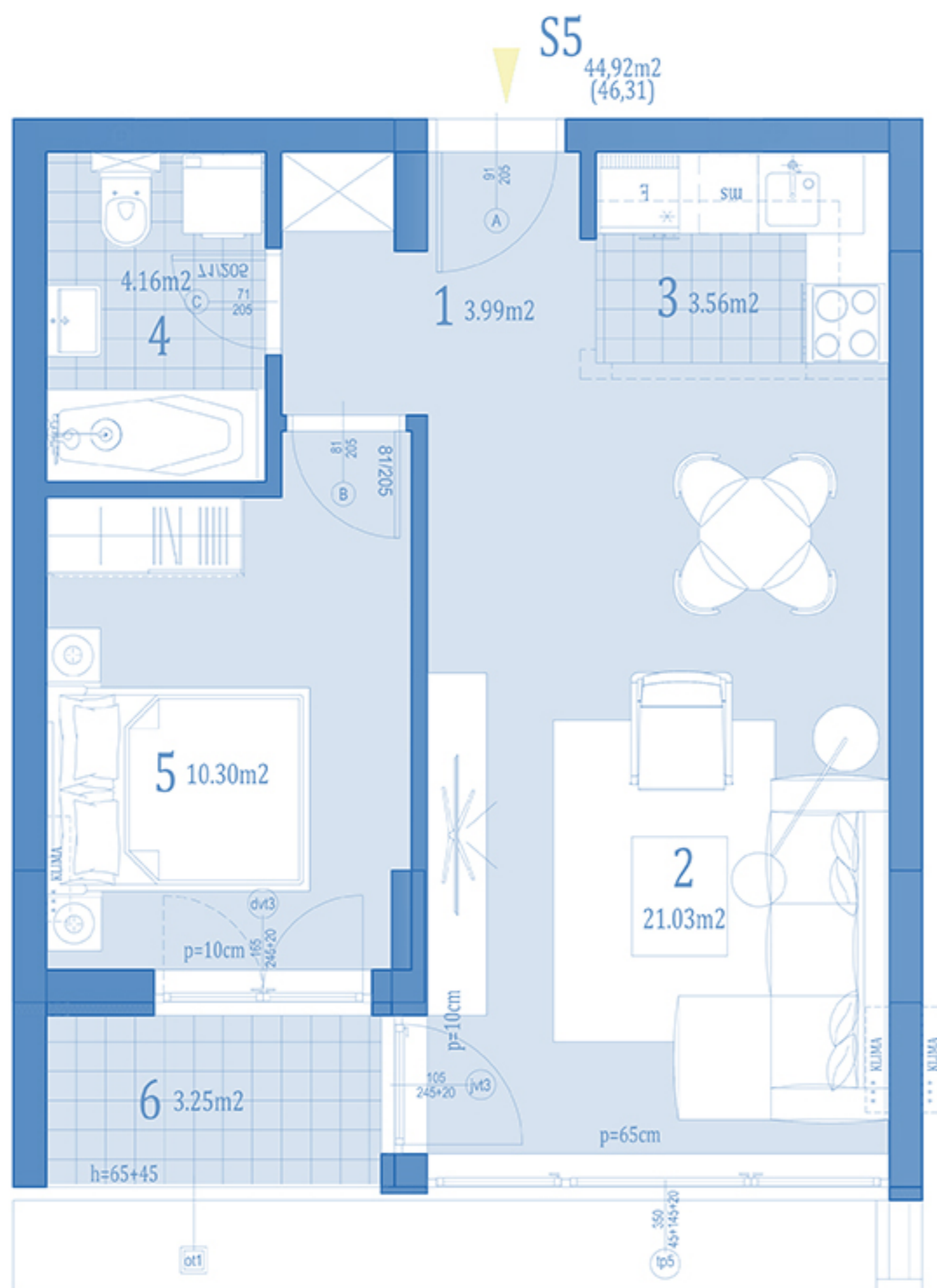


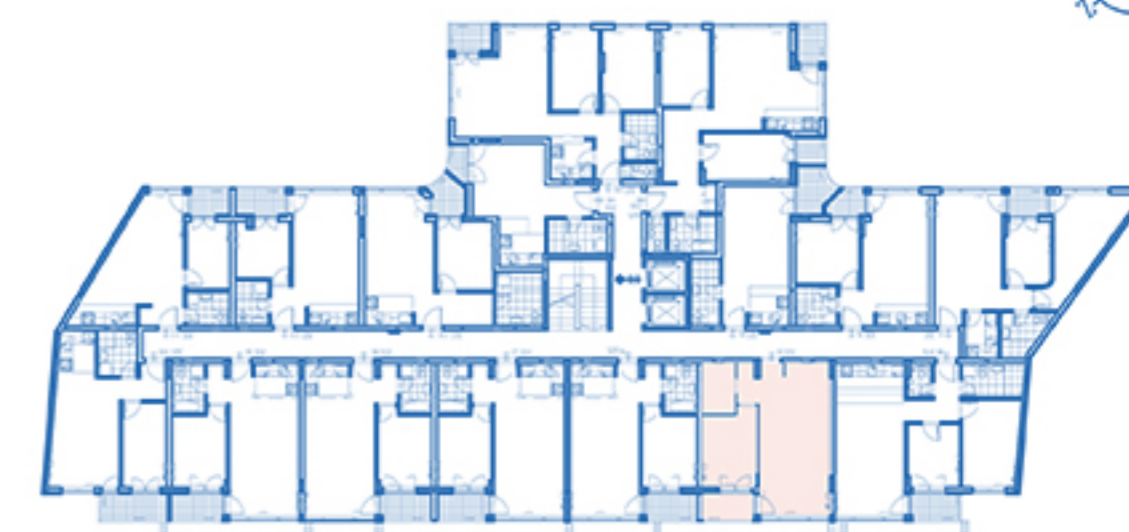
OSNOVA STANA R=1:50



S5		dvosoban			
naziv prostorije		obrada poda	zatvoreni prostor/ m <sup>2</sup>	otvoreni prostor/ m <sup>2</sup>	površine/ m <sup>2</sup>
ULAZ	1	parket	3,99		3,99
DN.BORAVAK+TRPEZ.	2	parket	21,03		21,03
KUHINJA	3	ker.pločice	3,58		3,58
KUPATILO	4	ker.pločice	4,16		4,16
SOBA	5	parket	10,30		10,30
TERASA	6	ker.pločice		3,25	3,25
ukupno:			43.06	3.25	46.31
x0.97%					44.92

orijentacija stana

DVORIŠTE



ULICA KISAČKA

		dvosoban	
STAN	S5	SPRAT	1.