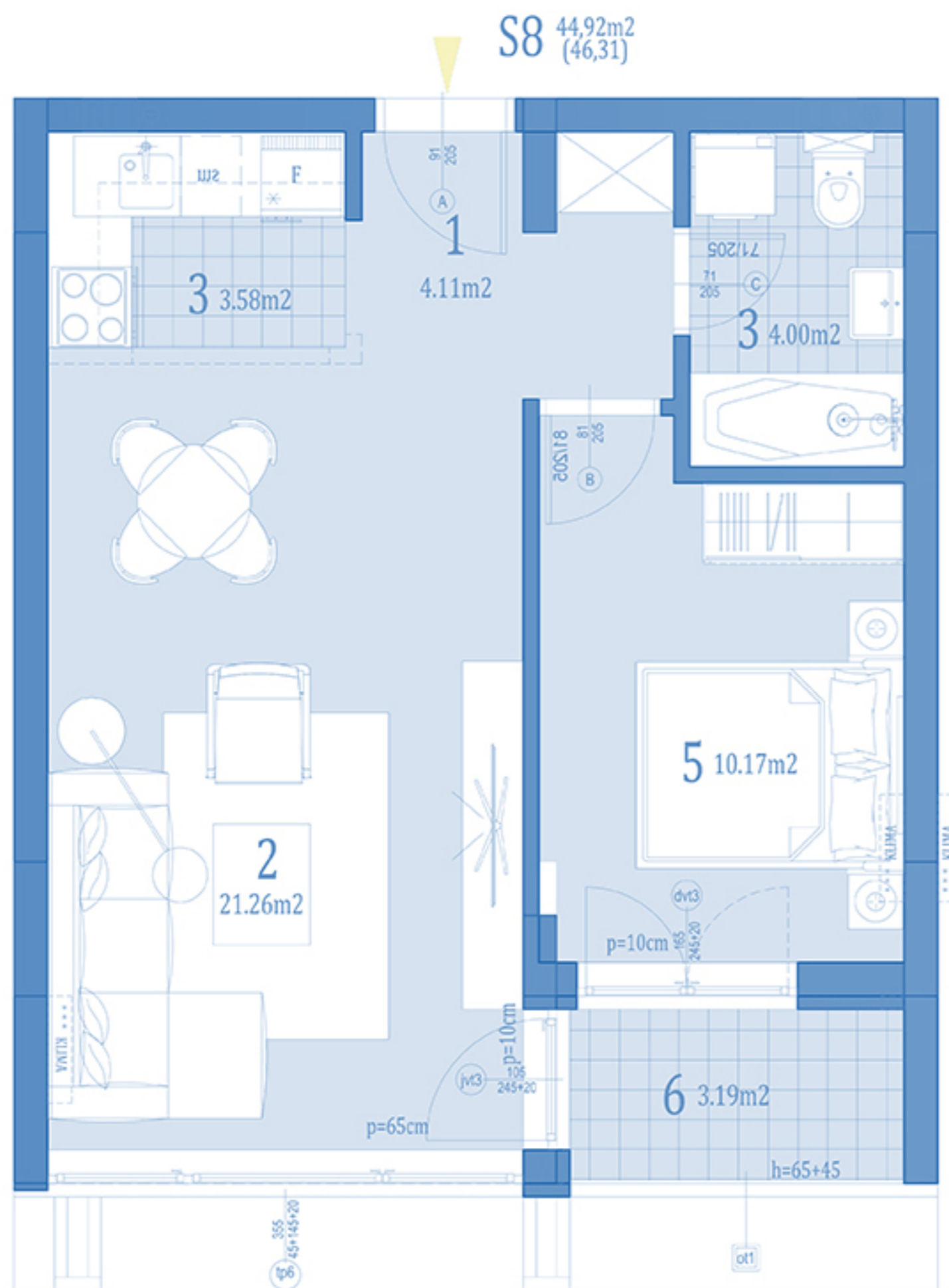


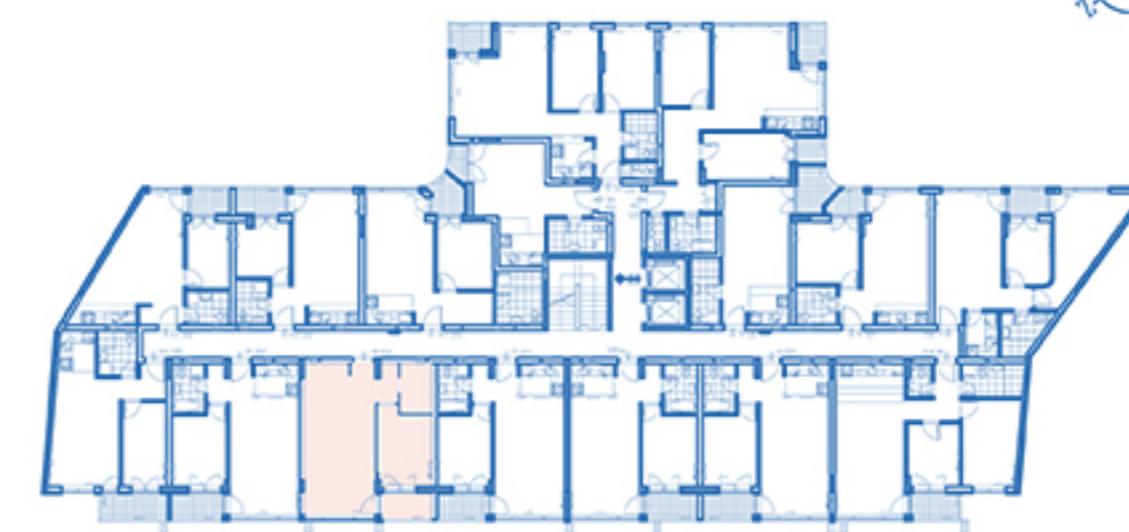
OSNOVA STANA R=1:50



S8		dvosoban			
naziv prostorije		obrada poda	zatvoreni prostor/ m ²	otvoreni prostor/ m ²	površine/ m ²
ULAZ	1	parket	4,11		4,11
DN.BORAVAK+TRPEZ.	2	parket	21,26		21,26
KUHINJA	3	ker.pločice	3,58		3,58
KUPATILO	4	ker.pločice	4,00		4,00
SOBA	5	parket	10,17		10,17
TERASA	6	ker.pločice		3,19	3,19
ukupno:			43.12	3.19	46.31
			x0.97%		44.92

orientacija stana

DVORIŠTE



ULICA KISAČKA

		dvosoban	
STAN	S8	SPRAT	1.