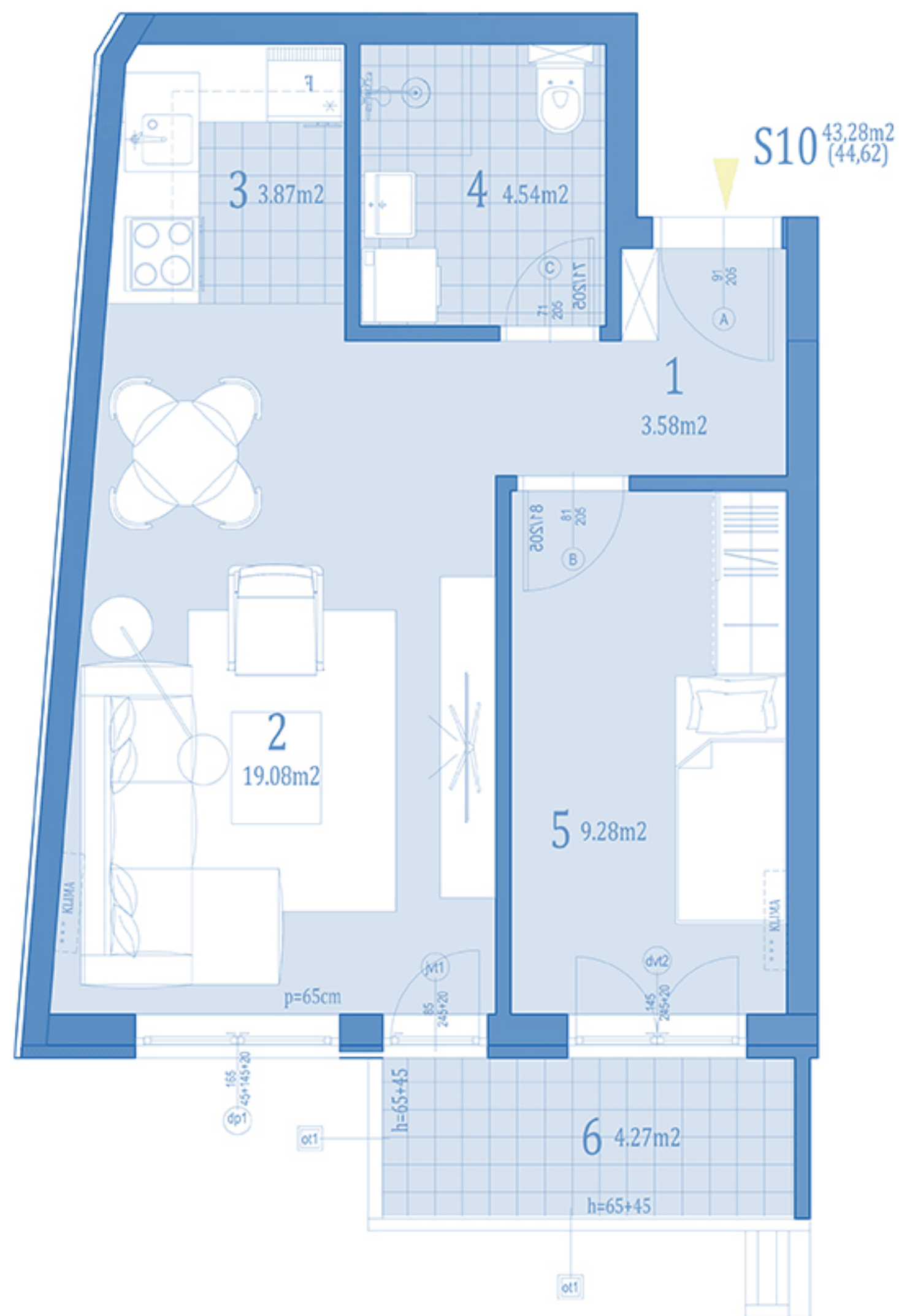


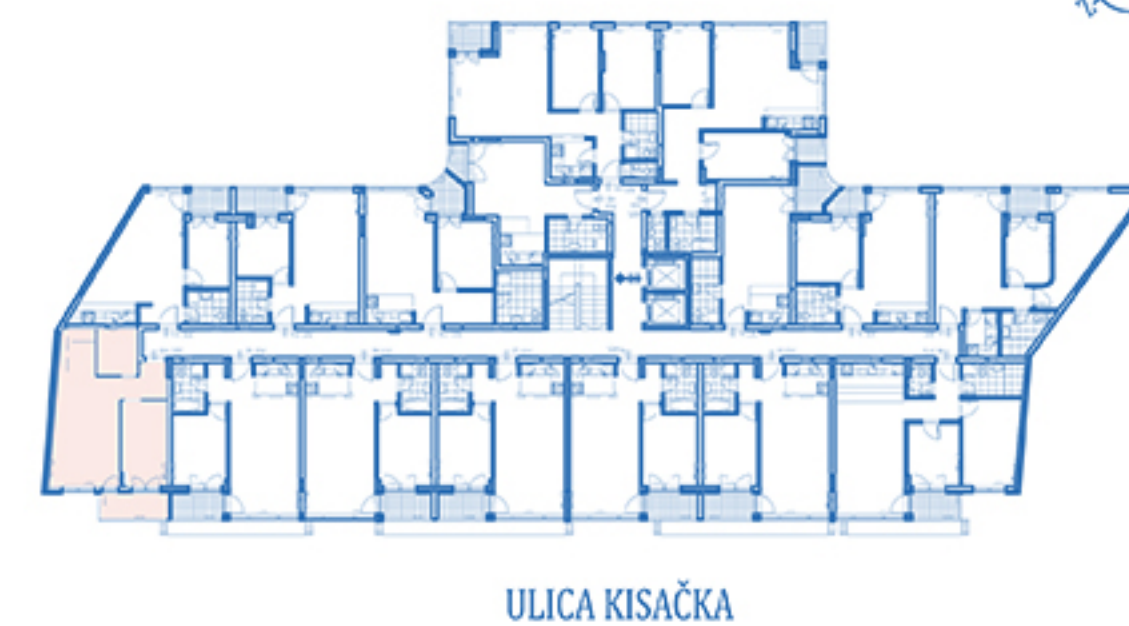
OSNOVA STANA R=1:50



S10		dvosoban			
naziv prostorije		obrada poda	zatvoreni prostor/ m ²	otvoreni prostor/ m ²	površine/ m ²
ULAZ	1	parket	3,58		3,58
DN.BORAVAK+TRPEZ.	2	parket	19,08		19,08
KUHINJA	3	ker.pločice	3,87		3,87
KUPATILO	4	ker.pločice	4,54		4,54
SOBA	5	parket	9,28		9,28
TERASA	6	ker.pločice		4,27	4,27
ukupno:			40.35	4.27	44.62
			x0.97%		43.28

orijentacija stana

DVORIŠTE



		dvosoban	
STAN	S10	SPRAT	1.