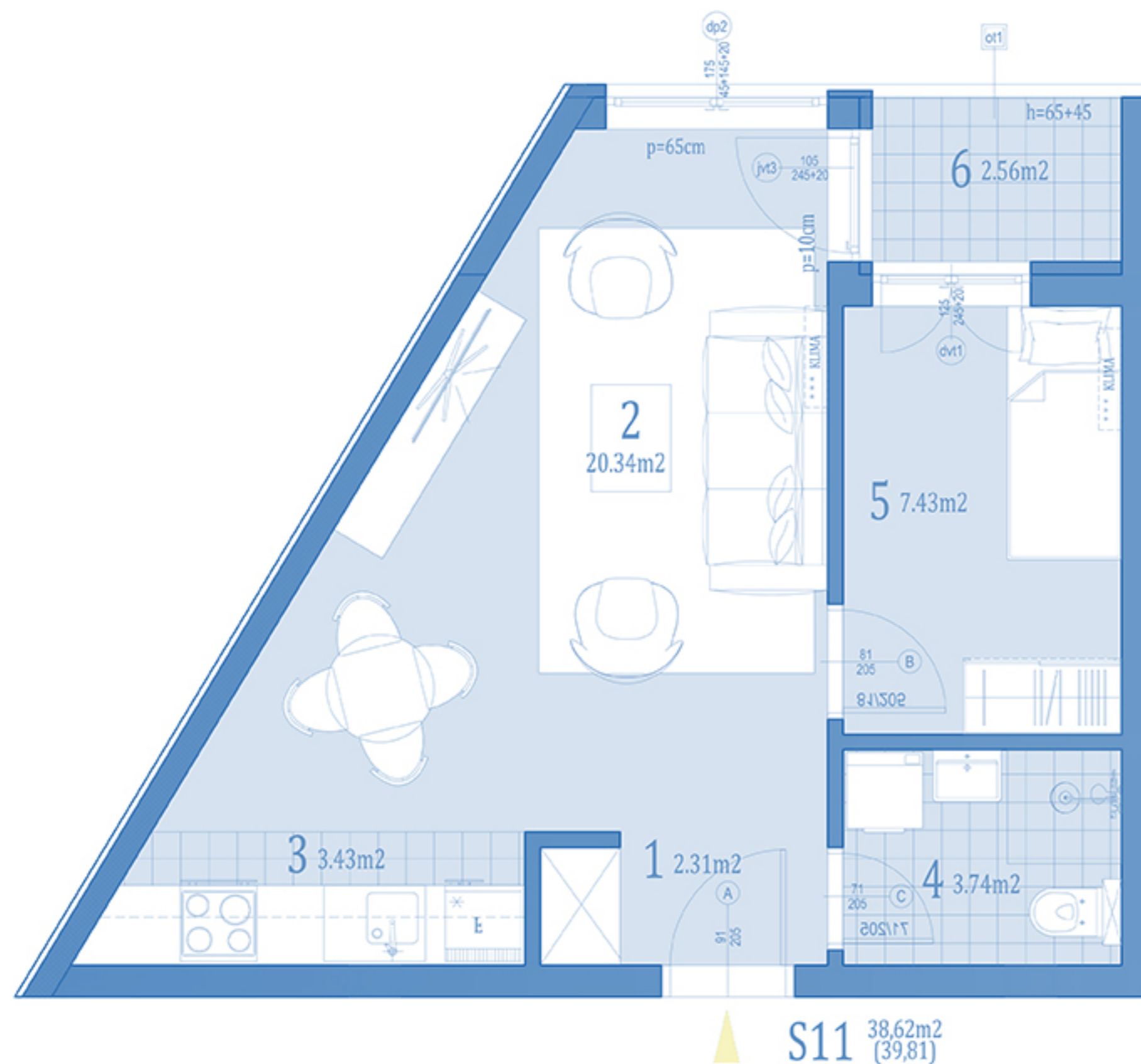


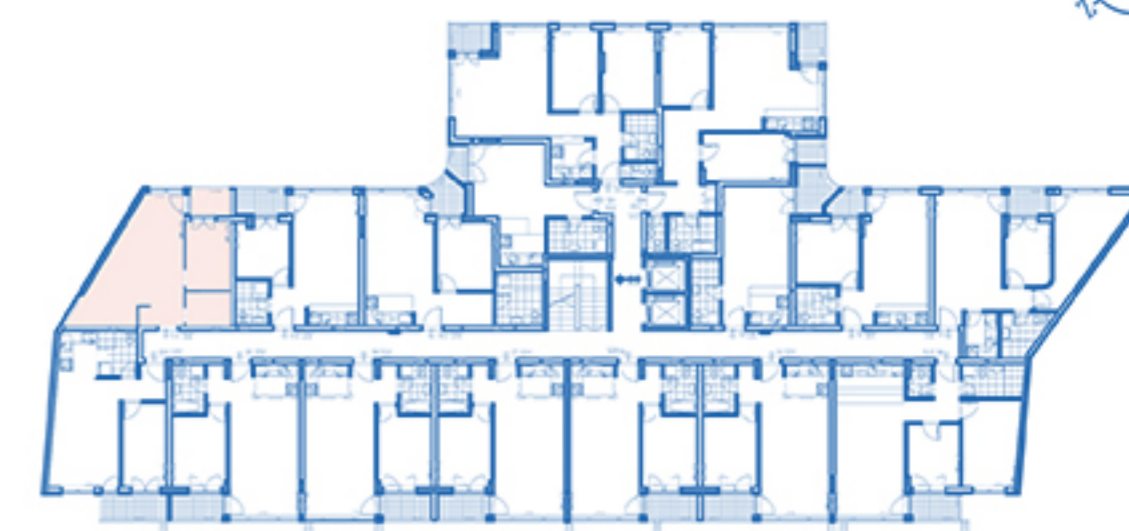
OSNOVA STANA R=1:50



S11		dvosoban			
naziv prostorije		obrada poda	zatvoreni prostor/ m ²	otvoreni prostor/ m ²	površine/ m ²
ULAZ	1	parket	2,31		2,31
DN.BORAVAK+TRPEZ.	2	parket	20,34		20,34
KUHINJA	3	ker.pločice	3,43		3,43
KUPATILO	4	ker.pločice	3,74		3,74
SOBA	5	parket	7,43		7,43
TERASA	6	ker.pločice		2,56	2,56
ukupno:			37,25	2,56	39,81
x0.97%					38,62

orientacija stana

DVORIŠTE



ULICA KISAČKA

		dvosoban	
STAN	S11	SPRAT	1.